

Quick Install Guide

WHAT'S IN THE BOX

- 1 x BEC MX-200(e)/200A(e) Device
 - 1 x DIN Rail Mounting Kit
 - 1 x This Quick Install Guide
 - 1 x CD containing the User Manual
 - 1 x DC Power Adapter, 12V 1.2A
 - 1 x Power Terminal Block 2-Pin 3.5mm
 - 1 x Power Converter with 2-Pin Terminal Block
- (Optional Accessories)
- 3G/4G Antennas
 - Active GPS Antenna
 - Ethernet (RJ-45) Cable



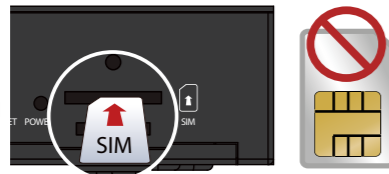
SETTING UP THE ROUTER

1 Insert the SIM Card

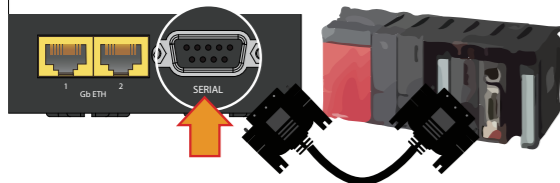
Note: Power off the MX-200(e)/200A(e) before inserting/removing the SIM

Remove the SIM cover then insert the SIM card(s) (2FF) with the metal contacts (gold plate) facing down to the SIM slot(s) then push it all the way in until you hear the clicking sound.

Replace the metal SIM cover after inserting the SIMs.



2 Connect the Serial (RS-232)



Use a RS-232 (DB-9) male serial adapter to connect with industrial equipment – including PLC, SCADA, Sensor, Meters, and Motor.

3 Attach the LTE & GPS Antennas



Screw the 2 male SMA Cellular/or GPS antennas until fully attached to the Cellular and/or GPS modules.

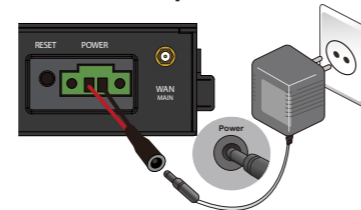
Connect to the MAIN port, the primary cellular antenna port to transmit and

receive signal, if decide to use one Cellular(LTE) antenna.

Do not over-torque the antenna on the connector.

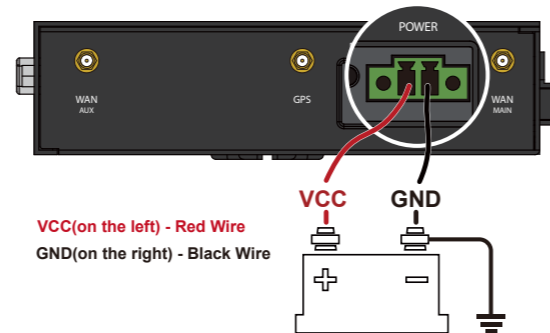
4 Connect to Power Source

Use the DC Power Adapter



Attach the power converter with 2-pin terminal block to the MX-200(e)/200A(e) and plug in the supplied power adapter, 12VDC 1.2A.

Use External Power Supply



Attach the **power terminal block (TB)** to MX-200(e)/200A(e) and connect wire leads from a power supply to MX-200(A)TB plug.

RED Wire (Left Connector): VCC/V+. Connect to the positive supply voltage. Input voltage range is from **9V to 56V**.

BLACK Wire (Right Connector): Ground (GND)/V-. Connect to the negative supply voltage.

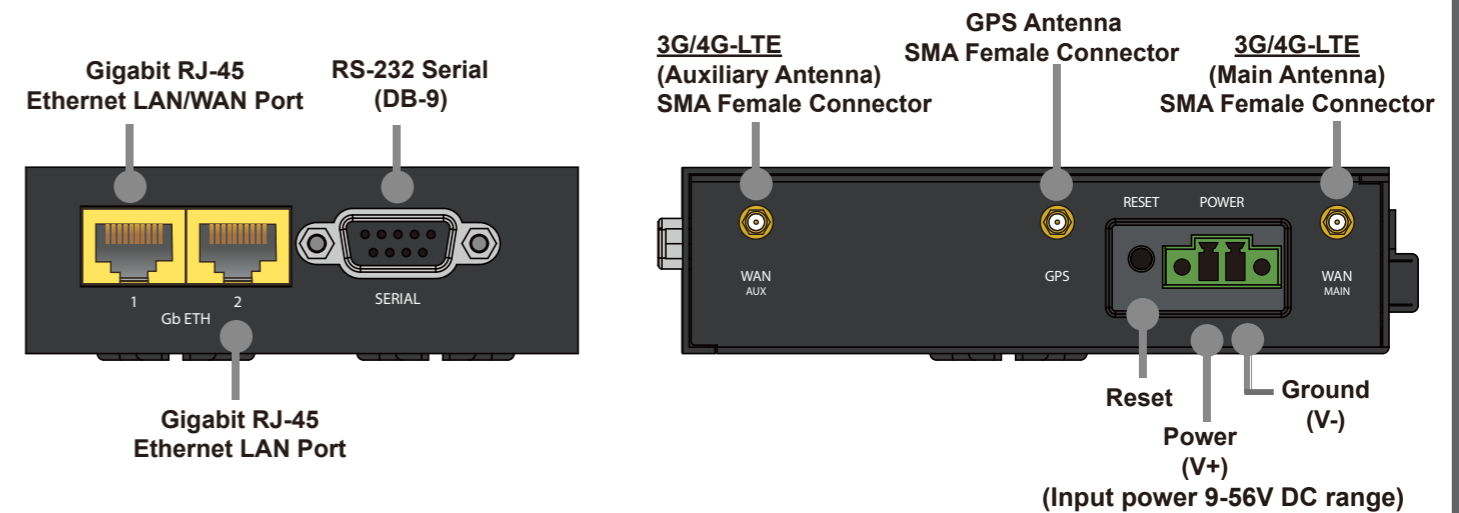
5 Access to the MX-200(e)/200A(e)

Access to the MX-200(e)/200A(e) Web interface by entering <http://192.168.1.254> in the address bar of the web browser.

Default Login: Username (admin) and Password (A unique 12-digit password can be found on the device label).

The **Quick Start Wizard** provides key steps to connect the MX-200(e)/200A(e) to the Internet.

DEVICE OVERVIEW & LEDS



- 1 GIGABIT ETHERNET (Gb ETH) (LAN #1 & #2)**
Green: Transmission speed is at Gigabit speed (1000Mbps)
Orange: Transmission speed is at 10/100Mbps
Blinking: Data being transmitted/received
- 2 WAN (Cellular Signal Strength Indicator)**
Green: RSSI > -69 dBm. Excellent signal
Green / Fast Flashing: -69 > RSSI > -81dBm. Good signal
Red / Fast Flashing: -81 > RSSI > -99dBm. Fair signal
Red / Slow Flashing: -99dBm > RSSI. Poor signal
Red: No signal and the 4G LTE module is in service
Off: No LTE module or LTE failure
- 3 INTERNET**
Green: IP traffic via WAN
Red: WAN IP request failed
Off: No WAN Connection or in Bridge Mode
- 4 POWER**
Green: System ready
Red: Boot failure
- 5 SIM Card Slot**
Insert mini SIM card (2FF) with the gold contact facing down. Push mini SIM card (2FF) inwards to eject it
** Power off the MX-200(e)/200A(e) before inserting or removing the SIM card*

PRODUCT SUPPORT AND CONTACT INFORMATION

Most problems can be solved by referring to the Troubleshooting section in the User Manual.

If you have other inquiries or need further technical support, please contact with your Internet Service Provider or visit us at www.bectechnologies.net

FCC Caution:

This device complies with Part 15 of the FCC Rules.

Operation is subject to the following two conditions:

- (1) this device may not cause harmful interference, and
- (2) this device must accept any interference received, including interference that may cause undesired operation.

DIN RAIL MOUNTING KIT

KIT CONTAINS: DIN Rail Clip and Six (6) Clip Mounting Screws

The DIN Rail mounting kit is designed to securely attach and clip the MX-200(e)/200A(e) onto a TS35 or standard 35mm top hat (EN 50022/BS 5584) DIN rail in the horizontal position.

Two (2) mounting locations to mount the DIN rail clip on the surface of MX-200(e)/200A(e), back or rear side.

Please follow the steps to complete DIN rail mounting installation.

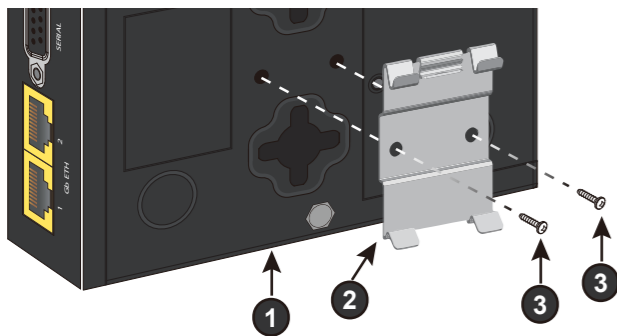
ATTACHING TO A DIN RAIL

- I Attach and fasten the DIN rail clip (known as clip) to the back or rear side of the MX-200(e)/200A(e) using two (2) clip mounting screws included in this mounting kit.**

1. MX-200(e)/200A(e)

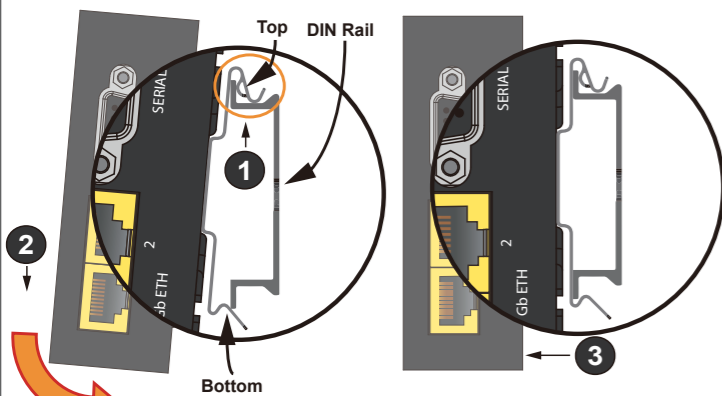
2. Mounting Bracket

3. Mounting Screws



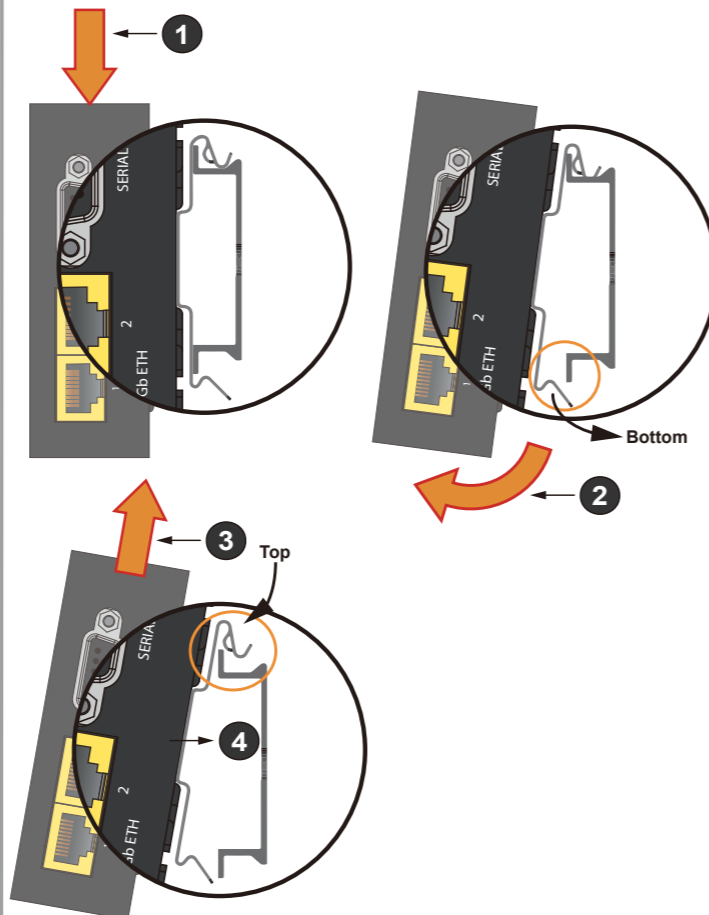
- II Clip and secure the MX-200(e)/200A(e) onto a DIN rail.**

1. Hook the top of the clip onto the top edge of the DIN rail. Make sure the clip is firmly against the rail.
2. Push down the bottom of the MX-200(e)/200A(e) to snap it onto the lower edge of the DIN rail.
3. The MX-200(e)/200A(e) is now mounted on the DIN rail.



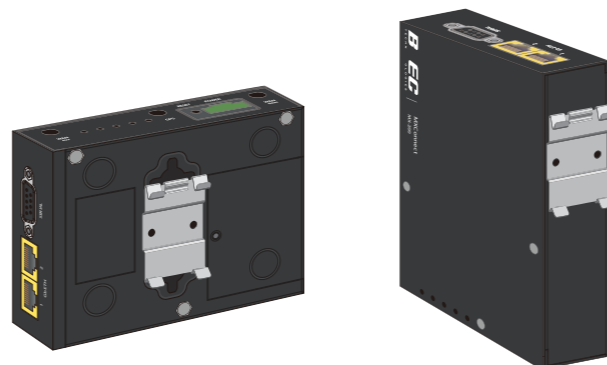
REMOVING FROM A DIN RAIL

- I Remove MX-200(e)/200A(e) from a DIN rail.**
- 1-2. Push down the MX-200(e)/200A(e) to free the bottom of the clip from the DIN rail.
 - 3-4. Unhook the top of the clip and pull the MX-200(e)/200A(e) away from the DIN rail.



REMOVING FROM A DIN RAIL

- I Install clip in either vertical or horizontal position.**



v2.00



MX-200(e) MX-200A(e) Quick Install Guide

THIS SPACE INTENTIONALLY LEFT BLANK